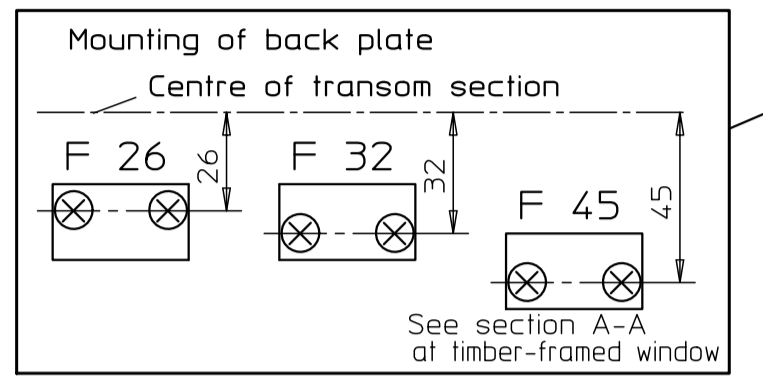
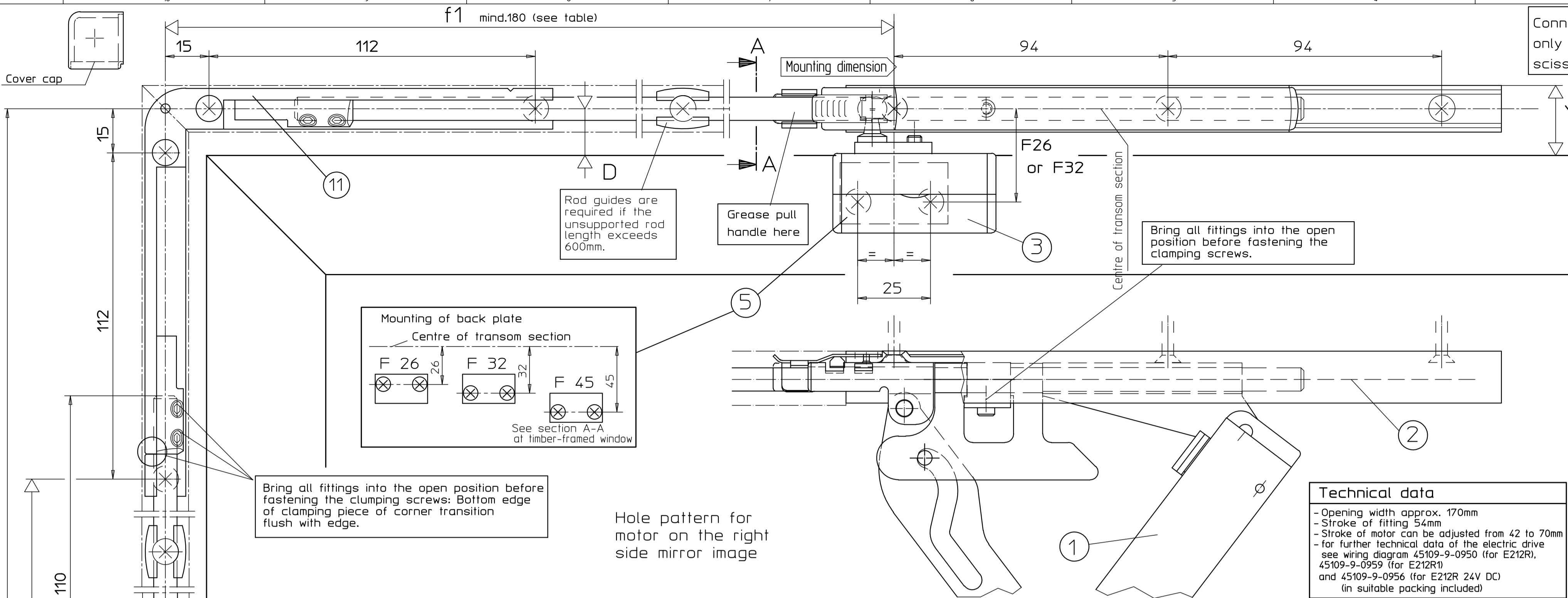
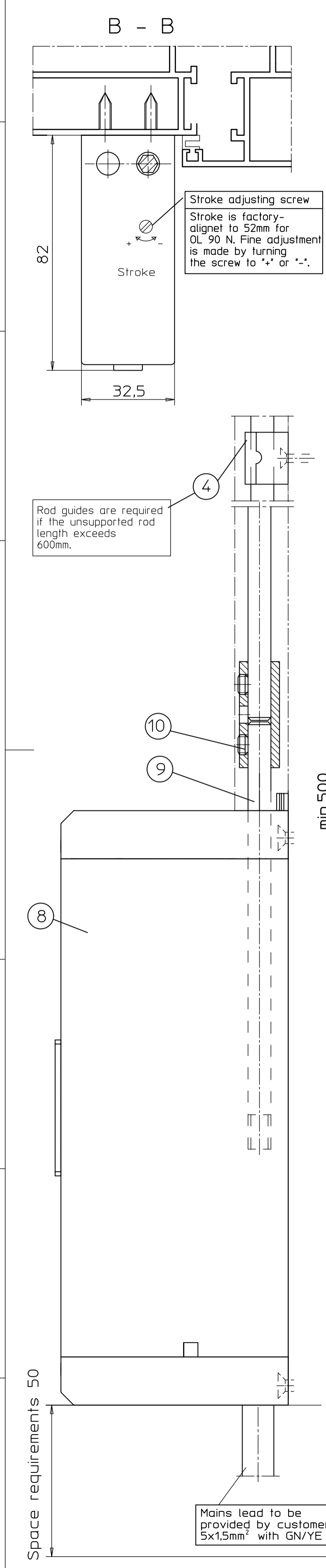
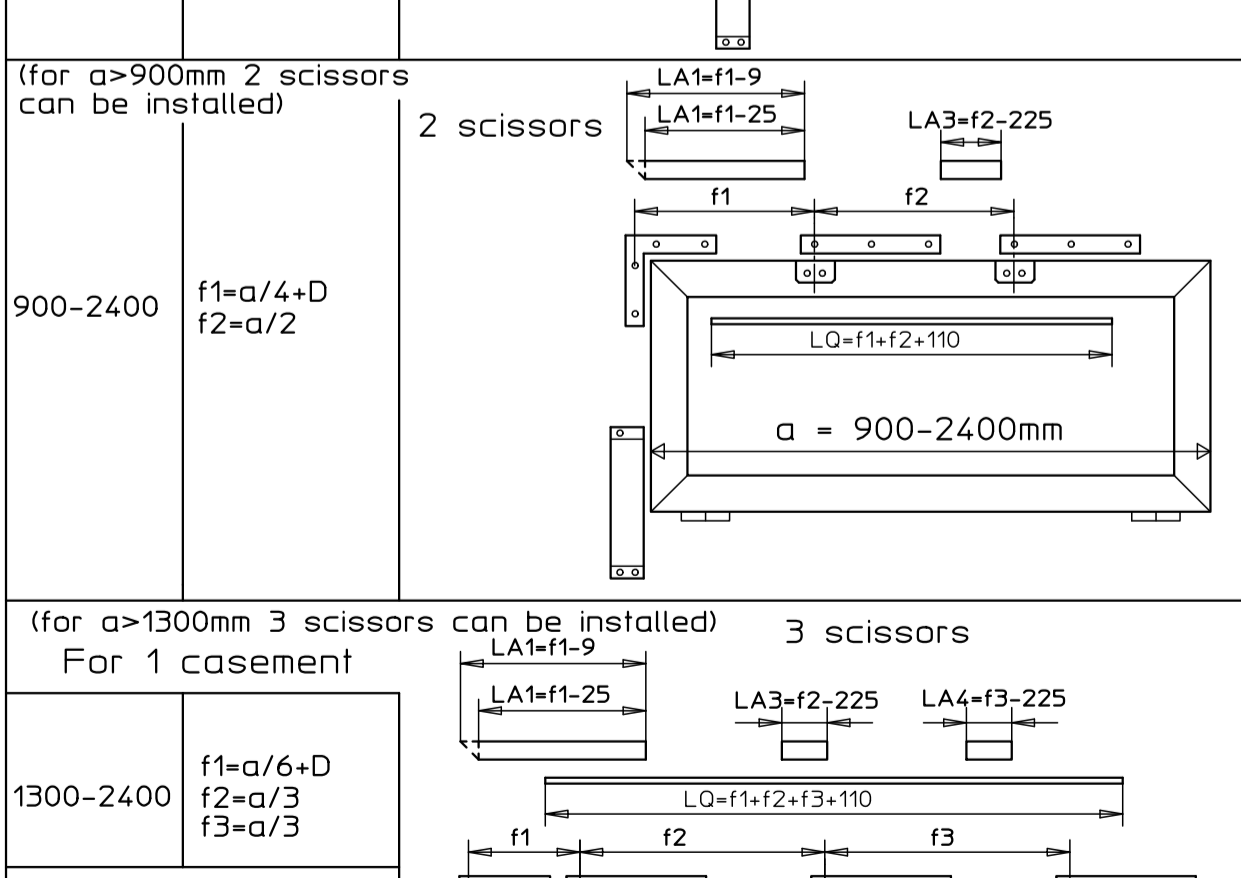
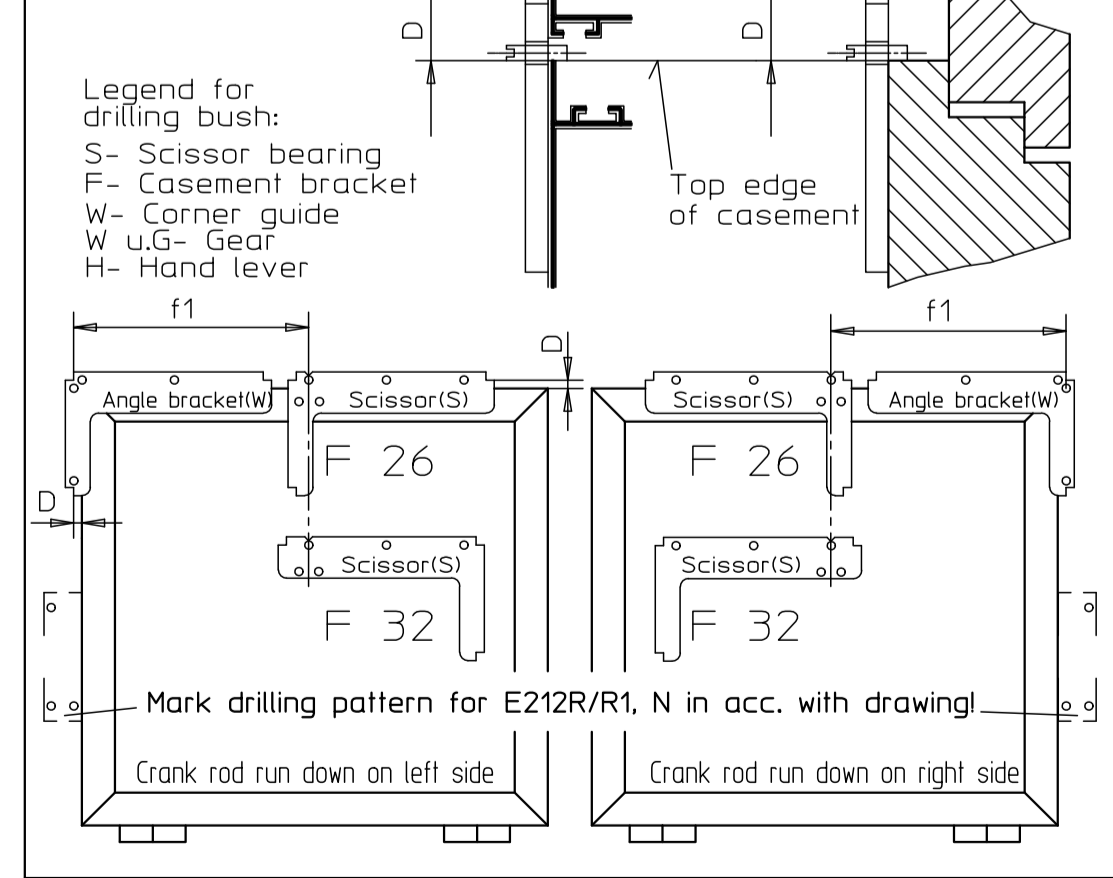
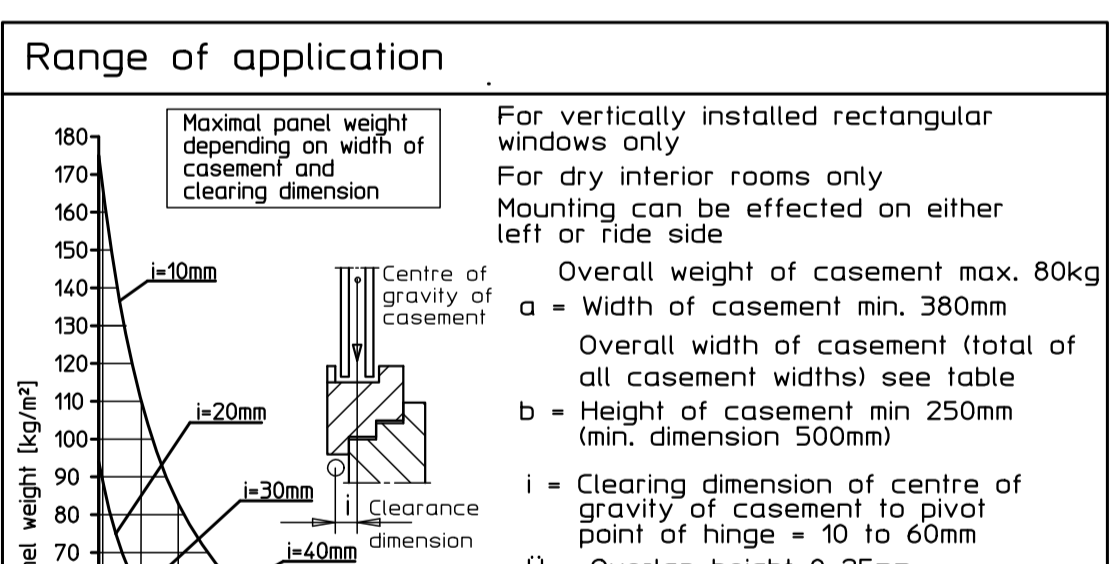
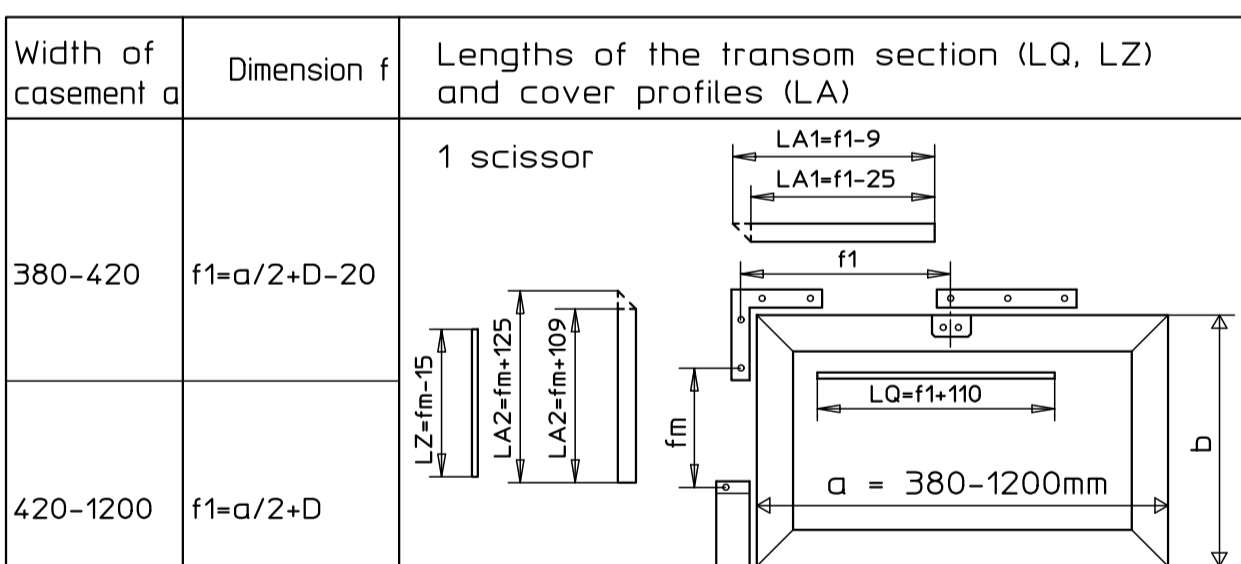
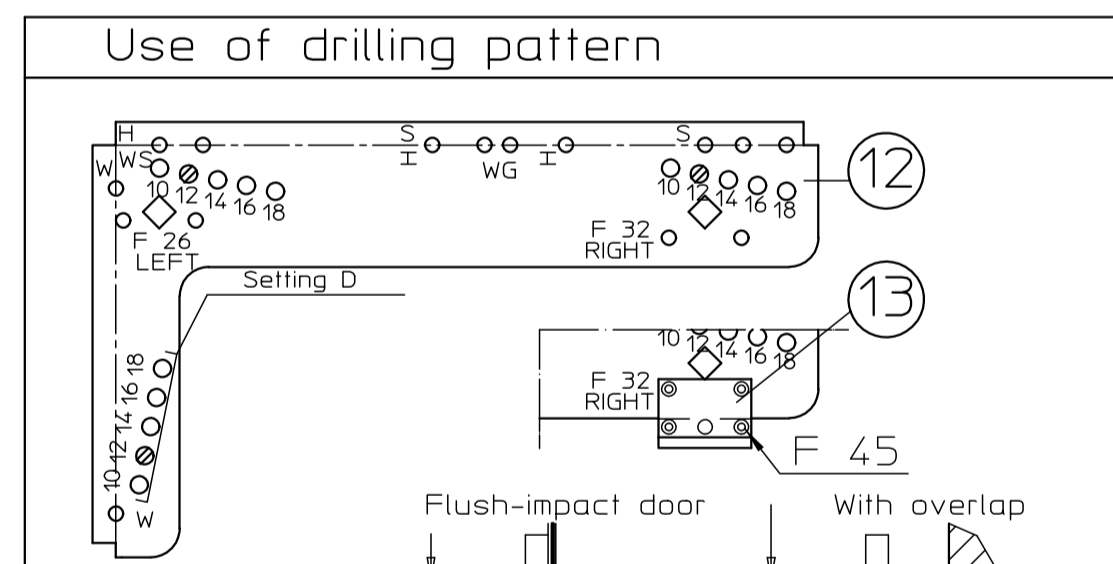
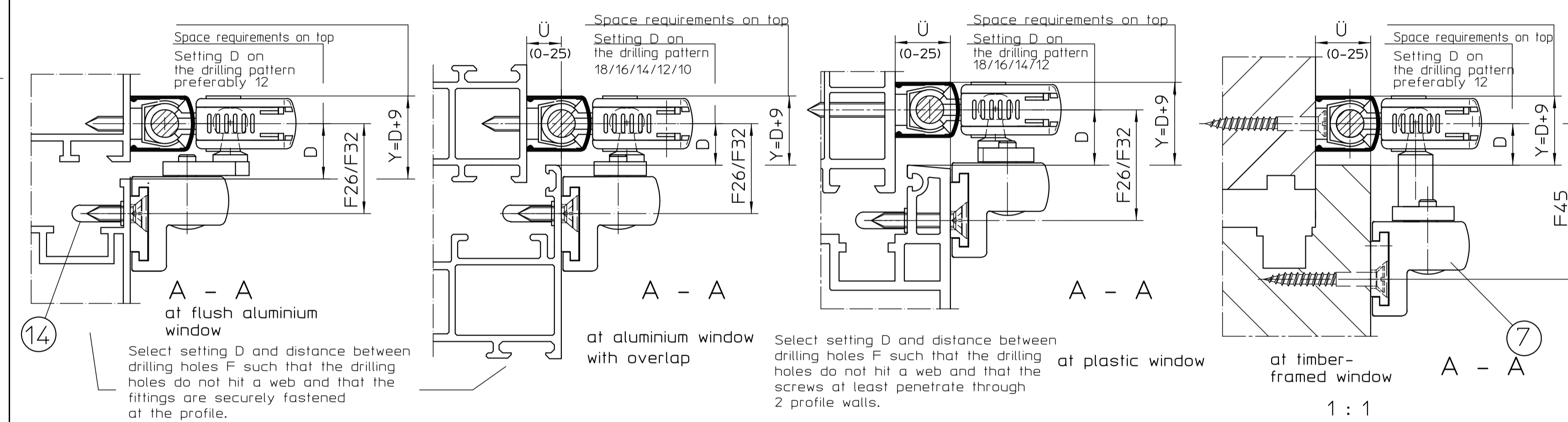
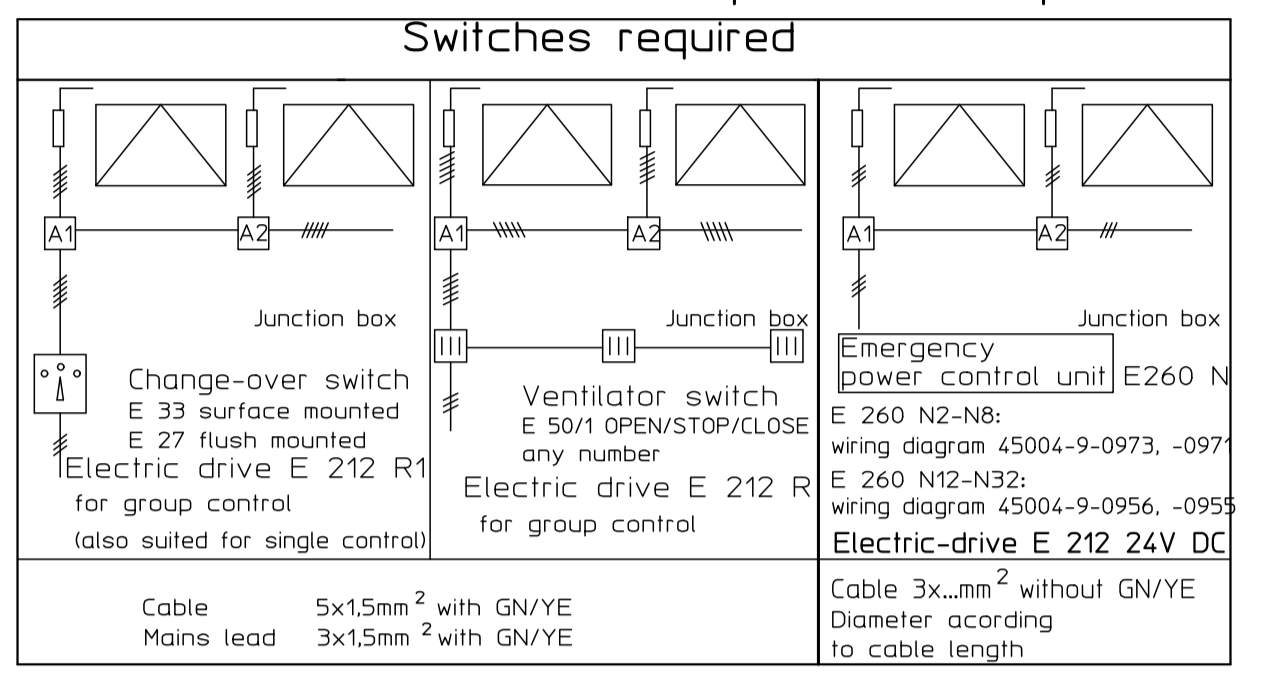


Diese Zeichnung entspricht dem Entwicklungsstand des Zeichnungsdatums bzw. der letzten Änderungsangabe. Aus der Benutzung der Zeichnung können keine Ansprüche gleich welcher Art, einschließlich Schadensersatzansprüche, abgeleitet und gegen GEZE geltend gemacht werden. Die Zeichnung stellt einen Entwurf dar und ist nur für die Veranschaulichung der Bauteile und deren Zusammenbau aus der Zeichnung ergebenden Ansprüchen dienlich. GEZE übernimmt keine Haftung für Schäden, die aus der Benutzung der Zeichnung resultieren. GEZE wird für die Zeichnung nicht verantwortlich gemacht.



Technical data
 - Opening width approx. 170mm
 - Stroke of fitting 54mm
 - Stroke of motor can be adjusted from 42 to 70mm
 - for further technical data of the electric drive see wiring diagram 45109-9-0950 (for E212R), 45109-9-0959 (for E212R1) and 45109-9-0956 (for E212R 24V DC) (in suitable packing included)



| Type of window | Fastening screws | drilling ø |
|----------------|---|------------|
| Wood | Flat head screws 4x35 DIN 97 or DIN 7997 | 2.5mm |
| Aluminium | Tapping screw with countersunk head 4xL DIN 7972 or DIN 7982, screw must penetrate through a profile wall of at least 1.8mm thickness | 3.5mm |
| Plastic | Tapping screw with countersunk head 4xL DIN 7972 or DIN 7982, screw must penetrate through 2 profile walls | 3.5mm |

| Order requirements * for OL 90 N with ... | Fittings (see list of parts) | | | | | | | | | |
|--|------------------------------|----|------|---|-----|---|-----|---|---|-------|
| | A | B | C+C1 | D | E | F | G | H | J | |
| Electric drive E 212 R1 for group control (see switches required) | X | X* | X | X | X** | | | | | |
| Electric drive E 212 R for group control (see switches required) | X | X* | X | X | X** | X | X** | | | |
| Electric drive E 212 24V for group control (see switches required) | X | X* | X | X | | | | | X | E260N |

| Item | Pcs. | Designation | Id. -Nr. for colour | | | | | Pcs. |
|---|------|--|-----------------------|-------|------------------------------|-------|--------|--------|
| | | | anod. alu. | white | dark bronze | black | RAL... | |
| A11 | 1 | Corner guide OL 90 N | 70546 | | | | | 4 |
| B | 1 | Scissor OL90N | 30373 | 30377 | 30374 | 74509 | 30376 | 6 |
| Contents: | | | | | | | | |
| 1 | 1 | Slimline scissors OL 90 N | | | | | | |
| 2 | 1 | Scissor bearing | | | | | | |
| 3 | 1 | Casement bracket | | | | | | |
| 4 | 1 | Rod guide | | | | | | |
| 5 | 1 | Back plate | | | | | | |
| 6 | 1 | Joint | | | | | | |
| 14 | 2 | Protective covers | | | | | | |
| C | 1 | Scissor OL 90 N without casement bracket | 71203 | 71207 | 71204 | 99477 | 71206 | 4 |
| Contents: | | | | | | | | |
| Pos.: 1, 2, 4, 6: | | | | | | | | |
| C1 | 1 | Casement bracket f. timber-framed window with euro nut | 30886 | 30890 | 30887 | 99475 | 30889 | 2 |
| Contents: | | | | | | | | |
| 1 | 1 | Casem. bracket f. timber-framed window | | | | | | |
| 5 | 1 | Back plate | | | | | | |
| D | 10 | Rod coupling OL 90 | 43546 | | | | | |
| E | 1 | Electric drive E 212 R1 for group control | 20835 | 20839 | 20836 | 20838 | 20838 | 3 |
| Contents: | | | | | | | | |
| 8 | 1 | E 212 R/230V AC | | | | | | |
| 9 | 1 | Connecting rod | | | | | | |
| F | 1 | Change-over switch E 33 surface-mounted, Open-Stop-Close | 48941 | | | | | |
| 1 | 1 | Change-over switch E 27 flush-mounted, Open-Stop-Close | 48942 | | | | | |
| G | 1 | Electric drive E 212 R for group control | 05428 | 15435 | 05429 | 06683 | 06683 | 3 |
| Contents: | | | | | | | | |
| 8 | 1 | E 212 R/230V AC | | | | | | |
| 9 | 1 | Connecting rod | | | | | | |
| H | 1 | Vent switch E 50/1 Open-Stop-Close surface- and flushmounted | 06575 | | | | | |
| J | 1 | Electric drive E 212 24V | 10899 | 15540 | 10901 | 10915 | 10915 | 3 |
| Contents: | | | | | | | | |
| 8 | 1 | E 212 24V DC | | | | | | |
| 9 | 1 | Connecting rod | | | | | | |
| Rods and cover profiles | | | | | | | | |
| Cover profile L=2m * | | | 30401 | 30405 | 30402 | 74537 | 30404 | |
| Cover profile L=3m * | | | 30396 | 30400 | 30397 | 74539 | 30399 | |
| Cover profile L=6m * | | | 27558 | 27561 | 27559 | 74540 | 28342 | |
| Rod ø8 galvanised L=2m | | | 16555 | | | | | |
| Rod ø8 galvanised L=3m | | | 16591 | | | | | |
| Rod ø8 galvanised L=6m | | | 16592 | | | | | |
| Accessories (must be ordered separately) | | | | | | | | |
| Drilling pattern | | | for wood 54799 yellow | | for plastic/metal 54800 blue | | | |
| Add. drilling pattern OL 90 N for timber-framed window F=45 | | | 28141 | | | | | |
| Rod guide | | | 10878 | | | | | 1 each |

Space requirements 50
 Hole pattern for motor on the right side mirror image
 Mains lead to be provided by customer 5x1.5mm² with GN/YE

| Date | | Name / name | | Scale | | Material-Nr. | |
|------|----------|-------------|------------------|----------|-------|--------------|-------|
| 03 | 08/03/12 | tbl/5 | erstellt / drawn | 08/03/12 | tbl/5 | Blatt / von | 1 / 1 |
| 02 | 20/07/10 | tbl/5 | 490/68 | 06/06/13 | tbl/1 | Blatt / von | 1 / 1 |
| 01 | 08/10/06 | tbl/4 | 478/63 | 06/06/13 | tbl/1 | Blatt / von | 1 / 1 |
| 00 | 06/05/03 | tbl/4 | 478/63 | 06/06/13 | tbl/1 | Blatt / von | 1 / 1 |