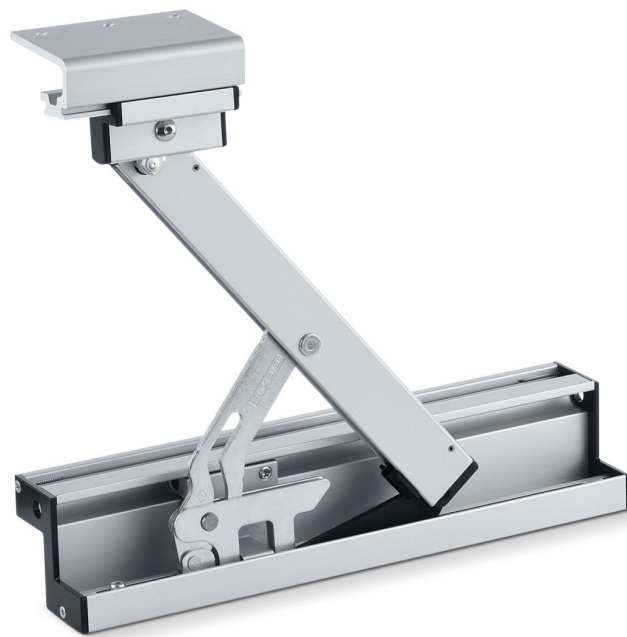


Product data sheet

OL 90 N top-hung outward-opening

Surface-mounted slimline skylight opener with an opening width of 170 mm



Product data sheet

OL 90 N top-hung outward-opening

2/2

Product features

- Achieves the full opening width of 170 mm for all leaf heights
- The opening width can be set
- With burglar-resistant locking (SKG-certified)
- Low space requirement thanks to flat design of the scissor stays
- Integrated leaf locking mechanism in the scissor stays guarantees safe locking
- Special lock increases safety and air-tightness
- Completely pre-mounted assembly groups facilitate installation
- Scissor stays and link arm can be installed from the front
- The leaf bracket is suitable for all overlap heights and materials

Application Areas

- Comfortable and daily ventilation of rooms and staircases
- Outward-opening top-hung windows with a reveal depth of 0-60 mm
- Installation on wooden, PVC or light alloy windows
- Leaf installation

Product Data Table

Productname	OL 90 N top-hung outward-opening
Length	274 mm
Opening width	170 mm
Leaf width (min.)	400 mm
Min. leaf height	370 mm
Leaf weight (max.)	80 kg
Adjustable opening width (stroke reduction)	Yes
Leaf lock integrated in the scissor stay	Yes
Scissor stay unhooked by release button	Yes
Burglary resisting lock (SKG)	Yes

Accessory

Product name

Gripping and cleaning scissor stay (FPS)