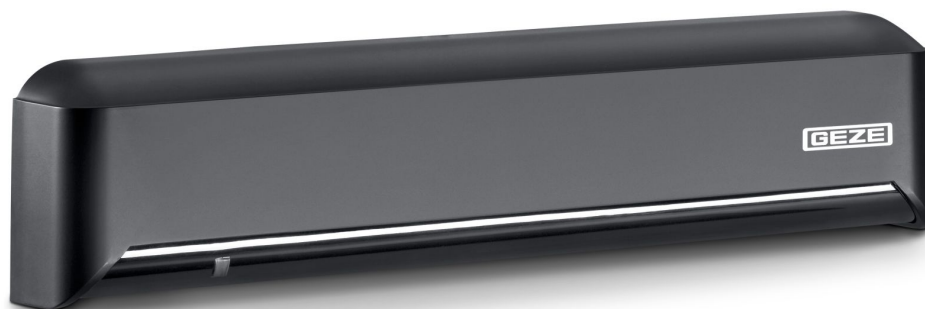


Product data sheet

GC 365

Combined detector for activating and protecting automatic sliding doors with four different infrared light curtain configuration settings



Product features

- Radars movement detector with infrared light curtain and third presence detector
- Reliable detection up to an installation height of 3500 mm.
- Four adjustable light curtain configurations without additional light prisms
- Fewer total sensors are required due to the large detection area on the floor
- Look back function secures the area between the door leaves during the hold-open time
- Installation and parameter setting information provided directly in the sensor housing
- All settings can be conveniently made by DIP switch

Application Areas

- Activation and protection of automatic sliding doors
- Interior and exterior doors

Product Data Table

Product features	GC 365
Technology	Electromagnetic radar waves/active infrared beams
CE tested	Yes
Operating voltage	12-30 V DC / 12-24 V AC
Current consumption	approx. 100 mA
Output	Radars GC 365 R: relay (potential-free contact), 50 V DC max. switching voltage, 300 mA max. output current, Radars GC 365 SF: transistor (opto-coupler, potential-free), 50 V DC max. switching voltage, 300 mA max. output current, Light curtain: electric relay, 50 V DC max. switching voltage, 100 mA max. output current
Height	61 mm
Width	267 mm
Installation depth	38 mm
Installation height (min.)	2000 mm
Installation height (max.)	3500 mm
Connection cable length	3000 mm
Weight	270 g
IP rating	IP54
Operating temperature	-20 °C - 55 °C
Humidity	0-80 % relative, non-condensing
Approvals	DIN 18650, EN 16005

Accessory

Product name
Ceiling bracket GC 365 / GC 341
Ceiling installation kit
Weather hood
Spot finder